

MAPLUS

CATALOG²⁰²⁰₂₀₂₁

**#READY
FOR
RAC
ING!**

MAPLUS FLUORINE EXPERTS

From the passion for skiing and the mastery of the fluorine chemistry Maplus, a division specialized in ski wax and technical accessories for ski preparation, was born in 1997.

Thanks to the synergies with the industrial chemical research of Maflon SPA, a dynamic and innovative company specialized in the production of high-tech fluorinated products, owned by Mazza Holding of Castelli Calepio (Bg), this industrial company, 100% Italian, in just twenty years, braving more long-lived competitors out, has managed to reach a leading position in high-level competitions.

Since its debut in the cross-country World Championship in Ramsau in 1998, with the novelty of a perfluorinated liquid product, up to the successes of the Pyeongchang Olympics in 2017 and Åre 2019, Maplus has become, with its perfluorinated products, the reference in terms of gliding and durability in the ski and snowboard World Cups.

We can declare with satisfaction that today Maplus waxes are used in competition by all the National Teams and by all the ski companies present in the World Cup!

And yet Maplus does not care only of athletes and their results: the experience gained at the highest level has allowed us to develop a complete line of wax ideal to meet the needs of any skier and snowboarder, from the freeride addicted to the beginner who wants an easy to manage equipment, up to the needs of the professional laboratories for the rentals.

MAPLUS

GENERAL CATALOG 2020/21



CREARE SLIDE E SEZIONE

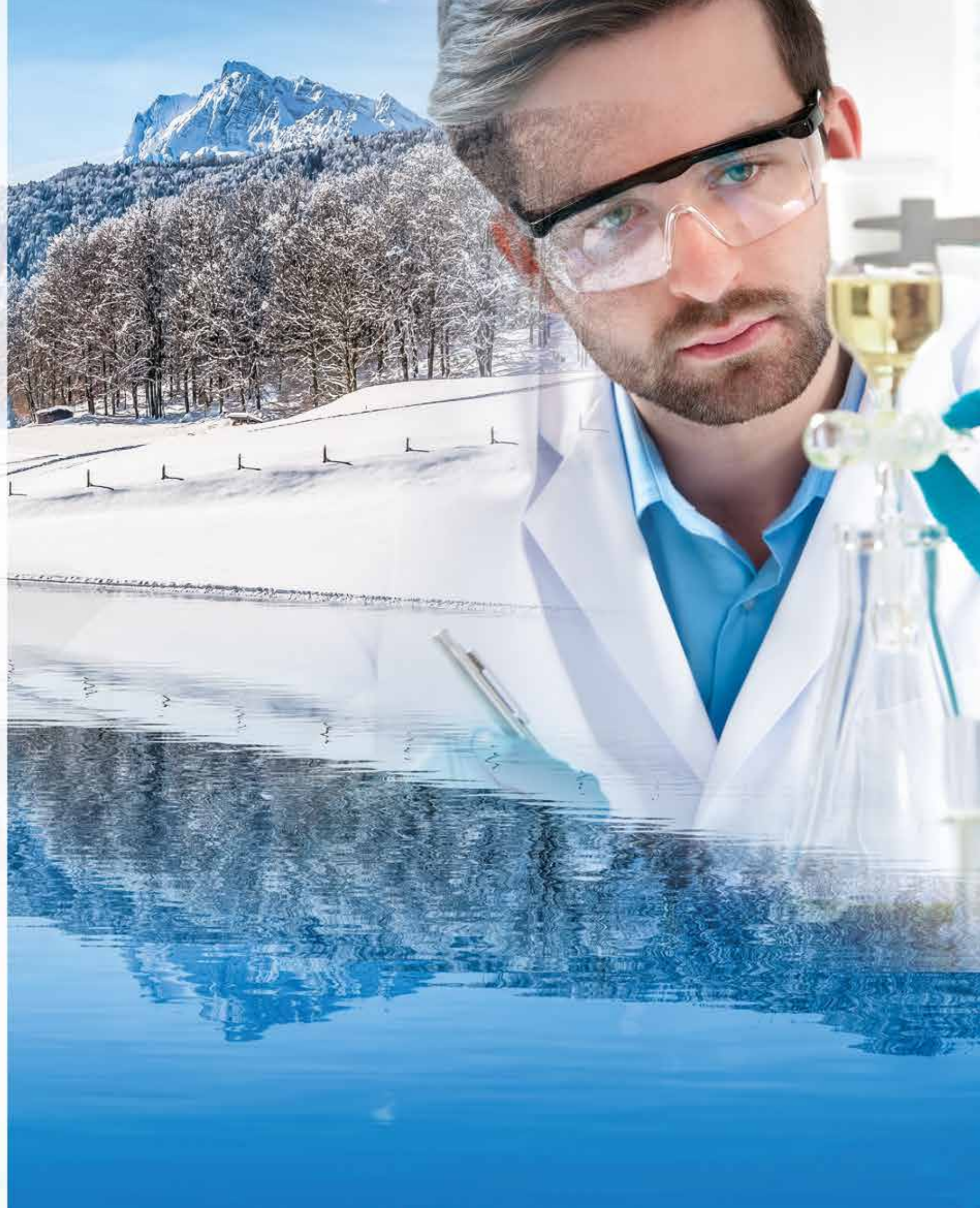
NEW ECO- FLUORWAX*

Respect for norms and the health of human beings and environmental have always been, and will continue to be, our priorities. In order to get our results in research and development of fluorinated products, we respect the most advanced rules in term of sustainable development. We have nevertheless invested the maximum of our energy and our efforts in finding new solutions and new products.

Now we are able to guarantee, in light of the new regulations, the utmost respect for anti-pollution and environmental protection standards together with the high standards skiwaxes to which our customers have been accustomed to for years.



*In compliance with Regulation (EU) 2017-1000.





SKI WAX

ALPINE/NORDIC/SNOWBOARD
RACE
LINE



XLS
EXTRA LONG LASTING SPEED

PRODUCTS

XLS 4.0
CODE: MW0894N
SIZE : 50 ml

USE

SNOW TEMP: 0° / - 6° C
HUMIDITY: 50 / 100%

Liquid accelerator for competition. Use with any type of artificial snow and natural snow from new moist to old transformed, icy and wet with temperatures from 0 ° to -6 °C and relative air humidity over 50%.



XLS
EXTRA LONG LASTING SPEED

PRODUCTS

XLS 6.0
CODE: MW0896N
SIZE : 50 ml

USE

SNOW TEMP: - 6° / - 12° C
HUMIDITY: 50 / 100%

Liquid accelerator for competition. Use with any type of artificial snow and natural snow from powder to transformed compact and icy with temperatures from -6° to -12°C and relative air humidity over 50%.



FP4
PERFLUORINATED POWDER WAX

PRODUCTS

FP4 COLD
CODE: MW0840N
SIZE : 30 gr

USE

SNOW TEMP: - 22° / - 8° C
HUMIDITY: 30 / 70%
APPLICATION: 160 °C

Fluorocarbon powder wax for racing. Use for all type of snow with temperature from -22°C to -8°C. Air humidity from 30% to 70%. Recommended hot application with waxing iron at 160°C.



FP4
PERFLUORINATED POWDER WAX

PRODUCTS

FP4 SUPERMED
CODE: MW0843N
SIZE : 30 gr

USE

SNOW TEMP: - 16° / - 2° C
HUMIDITY: 40 / 80%
APPLICATION: 160 °C

Fluorocarbon powder wax for racing. Use for all type of snow with temperature from -16°C to -2°C. Air humidity from 40% to 80%. Good also on icy hard snow in springtime condition. Recommended hot application with waxing iron at 160°C.



FP4
PERFLUORINATED POWDER WAX

PRODUCTS

FP4 MED
CODE: MW0841N
SIZE : 30 gr

USE

SNOW TEMP: - 9° / - 2° C
HUMIDITY: 60 / 100%
APPLICATION: 160 °C

Fluorocarbon powder wax for racing. Use for all type of snow with temperature from -9°C to -2°C. Air humidity from 60% to 100%. Recommended hot application with waxing iron at 160°C.



FP4
PERFLUORINATED POWDER WAX

PRODUCTS

FP4 HOT
CODE: MW0842N
SIZE : 30 gr

USE

SNOW TEMP: - 3° / 0° C
HUMIDITY: 60 / 100%
APPLICATION: 160 °C

Fluorocarbon powder wax for racing. Use for all type of snow with temperature from -3°C to 0°C. Air humidity from 60% to 100%. Recommended hot application with waxing iron at 160°C.



FP4
PERFLUORINATED LIQUID WAX

PRODUCTS

FP4 COLD
CODE: MW0850N
SIZE : 50 ml

USE

SNOW TEMP: - 22° / - 8° C
HUMIDITY: 30 / 70%

Fluorocarbon liquid wax for racing. Use for all type of snow with temperature from -22°C to -8°C. Air humidity from 30% to 70%. Excellent as accelerant and corrector at the start on fluorocarbon powder wax or on fluorinated paraffin. Recommended cold application with merino wool rollers.



FP4
PERFLUORINATED LIQUID WAX

PRODUCTS

FP4 SUPERMED
CODE: MW0853N
SIZE : 50 ml

USE

SNOW TEMP: - 16° / - 2° C
HUMIDITY: 40 / 80%

Fluorocarbon liquid wax for racing. Use for all type of snow with temperature from -16°C to -2°C. Air humidity from 40% to 80%. Good also on icy hard snow in springtime condition. Excellent as accelerant and corrector at the start on fluorocarbon powder wax or on fluorinated paraffin. Recommended cold application with merino wool rollers.



FP4
PERFLUORINATED LIQUID WAX

PRODUCTS

FP4 MED
CODE: MW0851N
SIZE : 50 ml

USE

SNOW TEMP: - 9° / - 2° C
HUMIDITY: 60 / 100%

Fluorocarbon liquid wax for racing. Use for all type of snow with temperature from -9°C to -2°C. Air humidity from 60% to 100%. Excellent as accelerant and corrector at the start on fluorocarbon powder wax or on fluorinated paraffin. Recommended cold application with merino wool rollers.



FP4
PERFLUORINATED LIQUID WAX

PRODUCTS

FP4 HOT
CODE: MW0852N
SIZE : 50 ml

USE

SNOW TEMP: - 3° / 0° C
HUMIDITY: 60 / 100%

Fluorocarbon liquid wax for racing. Use for all type of snow with temperature from -3°C to 0°C. Air humidity from 60% to 100%. Excellent as accelerant and corrector at the start on fluorocarbon powder wax or on fluorinated paraffin. Recommended cold application with merino wool rollers.



FP4

PERFLUORINATED SOLID WAX

Fluorocarbon solid wax for racing. Use for all type of snow with temperature from -22°C to -8°C. Air humidity from 30% to 70%. Excellent as accelerant and corrector at the start on fluorocarbon powder wax or on fluorinated paraffin. Recommended cold application with polyester and merino wool rollers.

PRODUCTS

FP4 COLD

CODE: MW0860N
SIZE: 20 gr

USE

SNOW TEMP: - 22°/ - 8° C
HUMIDITY: 30 / 70%



FP4

PERFLUORINATED SOLID WAX

Fluorocarbon solid wax for racing. Use for all type of snow with temperature from -16°C to -2°C. Air humidity from 40% to 80%. Good also on icy hard snow in springtime condition. Excellent as accelerant and corrector at the start on fluorocarbon powder wax or on fluorinated paraffin. Recommended cold application with polyester and merino wool rollers.

PRODUCTS

FP4 SUPERMED

CODE: MW0863N
SIZE: 20 gr

USE

SNOW TEMP: - 16°/ - 2° C
HUMIDITY: 40 / 80%



FP4

PERFLUORINATED SOLID WAX

Fluorocarbon solid wax for racing. Use for all type of snow with temperature from -9°C to -2°C. Air humidity from 60% to 100%. Excellent as accelerant and corrector at the start on fluorocarbon powder wax or on fluorinated paraffin. Recommended cold application with polyester and merino wool rollers.

PRODUCTS

FP4 MED

CODE: MW0861N
SIZE: 20 gr

USE

SNOW TEMP: - 9°/ - 2° C
HUMIDITY: 60 / 100%



FP4

PERFLUORINATED SOLID WAX

Fluorocarbon solid wax for racing. Use for all type of snow with temperature from -3°C to 0°C. Air humidity from 60% to 100%. Excellent as accelerant and corrector at the start on fluorocarbon powder wax or on fluorinated paraffin. Recommended cold application with polyester and merino wool rollers.

PRODUCTS

FP4 HOT

CODE: MW0862N
SIZE: 20 gr

USE

SNOW TEMP: - 3°/ 0° C
HUMIDITY: 60 / 100%



FLASH

FLUORINATED
LIQUID POLYMER
HIGH SPEED ACCELERATOR

Fluorinated liquid polymer for racing. Use for wet, water-ice and icy snow from -3° to 0°C with completely transformed snow crystal with medium and big grain. It works great from hard coarse snow to wet snow and in all intermediate conditions while step by step the sun melts the snow. The Yellow Flash is also the best in raining conditions but only if it's raining over completely transformed snow as above mentioned. If it's snowing with new big moist and wet flakes together with raining on new moist and polish snow, Yellow Flash does not work. It needs at least one day of snow transformation then it works greatly. Air humidity from 60% to 100%. Excellent as accelerant and corrector at the start on fluorocarbon powder waxes or on fluorinated paraffins. Recommended cold application with the felt cap-applicator.

PRODUCTS

YELLOW FLASH

CODE: MW0662N
SIZE: 50 ml

USE

SNOW TEMP: - 3°/ 0° C
HUMIDITY: 60 / 100%



HP3

HIGH FLUORINATED PARAFFIN

High fluoro powder paraffin for racing use as final product or as a base before applying fluorocarbon waxes FP4. Use for snow from -30°C to -10°C. Air humidity from 50% to 90%. This paraffin can be used alone as above mentioned or as an hardener for the high fluorinated paraffins HP3 VIOLET and HP3 RED in case of abrasive new or conserved snow or mixed with artificial snow. Use hot application with the waxing iron at 160°C.

PRODUCTS

HP3 GREEN POWDER

CODE: MW0900N
SIZE: 50 gr

USE

SNOW TEMP: - 30°/ - 10° C
HUMIDITY: 50 / 90%
APPLICATION: 160 °C



PRODUCTS

HP3

HIGH FLUORINATED PARAFFIN

HP3 BLUE MOLY COLD ADDITIVE

CODE: MW0901MN - 50 g
CODE: MW0911MN - 250 gr
CODE: MW0921MN - 1 kg

USE

SNOW TEMP: - 25°/ - 10° C
HUMIDITY: 50 / 90%
APPLICATION: 150° / 160 °C



High fluoro solid paraffin with moly for racing use as final product or as a base before applying fluorocarbon waxes FP4. Use for old abrasive dry snow with temperature from -25°C to -10°C. Air humidity from 50% to 90%. Excellent during a long period without snow falling and with dirty snow. This paraffin can be also used as a moly hardener for HP3 VIOLET and HP3 RED in case of old, abrasive, windy and dirty snow, both natural and artificial. Use hot application with the waxing iron at 150°/160°C.



PRODUCTS

HP3

HIGH FLUORINATED PARAFFIN

HP3 VIOLET

CODE: MW0902N - 50 gr
CODE: MW0912N - 250 gr
CODE: MW0922N - 1 kg

USE

SNOW TEMP: - 12°/ - 6° C
HUMIDITY: 60 / 100%
APPLICATION: 140° / 150 °C



High fluoro solid paraffin for racing use as final product or as a base before applying fluorocarbon waxes FP4. Use for all type of snow with temperature from -12°C to -6°C. Air humidity from 60% to 100%. In case of new or conserved abrasive snow and artificial snow, mix HP3 VIOLET with HP3 GREEN or LP2 GREEN if the humidity is lower. Use hot application with the waxing iron at 140°/150°C.



PRODUCTS

HP3

HIGH FLUORINATED PARAFFIN

HP3 RED

CODE: MW0903N - 50 gr
CODE: MW0913N - 250 gr
CODE: MW0923N - 1 kg

USE

SNOW TEMP: - 7°/ - 3° C
HUMIDITY: 60 / 100%
APPLICATION: 130° / 140 °C



High fluoro solid paraffin for racing use as final product or as a base before applying fluorocarbon waxes FP4. Use for all type of snow with temperature from -7°C to -3°C. Air humidity from 60% to 100%. In case of new or conserved abrasive snow, artificial snow and springtime icy snow, mix HP3 RED with HP3 GREEN or LP2 GREEN if the humidity is lower. Use hot application with the waxing iron at 130°/140°C.



PRODUCTS

HP3 HIGH FLUORINATED PARAFFIN

HP3 YELLOW 1

CODE: MW0904N - 50 gr
CODE: MW0914N - 250 gr
CODE: MW0924N - 1 kg

USE

SNOW TEMP: -4° / 0° C
HUMIDITY: 60 / 100%
APPLICATION: 110° / 120 °C

High fluoro solid paraffin for racing use as final product or as a base before applying fluorocarbon waxes FP4. Use for new moist not wet snow with temperature from -4°C to 0°C. Air humidity from 60% to 100%. Is the only choice with polish and sticky snow. Use hot application with the waxing iron at 110°/120°C.



PRODUCTS

HP3 HIGH FLUORINATED PARAFFIN

HP3 YELLOW 2

CODE: MW0905N - 50 gr
CODE: MW0915N - 250 gr
CODE: MW0925N - 1 kg

USE

SNOW TEMP: -5° / -1° C
HUMIDITY: 60 / 100%
APPLICATION: 120° / 130 °C

High fluoro solid paraffin for racing use as final product or as a base before applying fluorocarbon waxes FP4. Use for transformed snow, not wet and springtime icy, with temperature from -5°C to -1°C. Air humidity from 60% to 100%. Use hot application with the waxing iron at 120°/130°C.



PRODUCTS

HP3 HIGH FLUORINATED PARAFFIN

HP3 ORANGE 1

CODE: MW0906N - 50 gr
CODE: MW0916N - 250 gr
CODE: MW0926N - 1 kg

USE

SNOW TEMP: -4° / 0° C
HUMIDITY: 60 / 100%
APPLICATION: 120° / 130 °C

High fluoro solid paraffin for racing use as final product or as a base before applying fluorocarbon waxes FP4. Use for springtime icy and grainy snow, but little wet, with temperature from -4°C to 0°C. Air humidity from 60% to 100%. Use hot application with the waxing iron at 120°/130°C.



PRODUCTS

HP3 HIGH FLUORINATED PARAFFIN

HP3 ORANGE 2

CODE: MW0907N - 50 gr
CODE: MW0917N - 250 gr
CODE: MW0927N - 1 kg

USE

SNOW TEMP: -3° / 0° C
HUMIDITY: 60 / 100%
APPLICATION: 100° / 110 °C

High fluoro solid paraffin for racing use as final product or as a base before applying fluorocarbon waxes FP4. Use for clean wet snow, with temperature from -3°C to 0°C. and rainy conditions. Air humidity from 60% to 100%. Use hot application with the waxing iron at 100°/110°C.



PRODUCTS

HP3 HIGH FLUORINATED PARAFFIN

HP3 ORANGE 2 MOLY HOT ADDITIVE

CODE: MW0907MN - 50 gr
CODE: MW0917MN - 250 gr
CODE: MW0927MN - 1 kg

USE

SNOW TEMP: -3° / 0° C
HUMIDITY: 60 / 100%
APPLICATION: 100° / 110 °C

High fluoro solid paraffin with moly for racing use as final product or as a base before applying fluorocarbon waxes FP4. Use for wet snow and dirty snow from -3°C to 0°C. and rainy conditions. Air humidity from 60% to 100%. This paraffin can be used as a moly additive for HP3 RED, YELLOW 2, and ORANGE 1 in case of old dirty snow, both natural and artificial. Use hot application with the waxing iron at 100°/110°C.



PRODUCTS

LP2 MEDIUM FLUORINATED PARAFFIN

LP2 GREEN POWDER

CODE: MW0950N
SIZE: 100 gr

USE

SNOW TEMP: -30° / -10° C
HUMIDITY: 20 / 60%
APPLICATION: 160 °C

Fluorinated powder paraffin for racing use as final product or as a base before applying fluorocarbon waxes FP4. Use for fine-abrasive snow from -30°C to -10°C. Air humidity from 20% to 60%. This paraffin can be also used as an hardener for paraffins LP2 VIOLET and LP2 RED or HP3 VIOLET and HP3 RED in case of new or conserved abrasive snow and mixed with artificial snow. Use hot application with the waxing iron at 160°C.



PRODUCTS

LP2 MEDIUM FLUORINATED PARAFFIN

LP2 BLUE

CODE: MW0951N - 100 gr
CODE: MW0961N - 250 gr
CODE: MW0971N - 1 kg

USE

SNOW TEMP: -25° / -10° C
HUMIDITY: 20 / 60%
APPLICATION: 150° / 160 °C

Fluorinated solid paraffin for racing use as final product or as a base before applying fluorocarbon waxes FP4. Use for old transformed snow, with temperature from -25°C to -10°C. Air humidity from 20% to 60%. Excellent during a long period without snow falling. Use hot application with the waxing iron at 150°/160°C.



PRODUCTS

LP2 MEDIUM FLUORINATED PARAFFIN

LP2 VIOLET

CODE: MW0952N - 100 gr
CODE: MW0962N - 250 gr
CODE: MW0972N - 1 kg

USE

SNOW TEMP: -12° / -6° C
HUMIDITY: 20 / 60%
APPLICATION: 140° / 150 °C

Fluorinated solid paraffin for racing use as final product or as a base before applying fluorocarbon waxes FP4. Use for all type of snow with temperature from -12°C to -6°C. Air humidity from 20% to 60%. In case of new or conserved abrasive snow and artificial snow, mix LP2 VIOLET with LP2 GREEN. Use hot application with the waxing iron at 140°/150°C.



PRODUCTS

LP2 MEDIUM FLUORINATED PARAFFIN

LP2 RED

CODE: MW0953N - 100 gr
CODE: MW0963N - 250 gr
CODE: MW0973N - 1 kg

USE

SNOW TEMP: -7° / -3° C
HUMIDITY: 30 / 60%
APPLICATION: 130° / 140 °C

Fluorinated solid paraffin for racing use as final product or as a base before applying fluorocarbon waxes FP4. Use for all type of snow with temperature from -7°C to -3°C. Air humidity from 30% to 60%. In case of new or conserved abrasive snow, artificial snow and springtime icy snow, mix LP2 RED with LP2 GREEN. Use hot application with the waxing iron at 130°/140°C.



PRODUCTS

LP2 MEDIUM FLUORINATED PARAFFIN

LP2 YELLOW

CODE: MW0954N - 100 gr
CODE: MW0964N - 250 gr
CODE: MW0974N - 1 kg

USE

SNOW TEMP: -5° / -1° C
HUMIDITY: 30 / 60%
APPLICATION: 110° / 120 °C

Fluorinated solid paraffin for racing use as final product or as a base before applying fluorocarbon waxes FP4. Use for all type of snow, not wet, with temperature from -5°C to -1°C. Air humidity from 30% to 60%. Use hot application with the waxing iron at 110°/120°C.



PRODUCTS

LP2 MEDIUM FLUORINATED PARAFFIN

LP2 ORANGE

CODE: MW0955N - 100 gr
CODE: MW0965N - 250 gr
CODE: MW0975N - 1 kg

USE

SNOW TEMP: -4° / 0° C
HUMIDITY: 30 / 60%
APPLICATION: 100° / 110 °C

Fluorinated solid paraffin for racing use as final product or as a base before applying fluorocarbon waxes FP4. Use for all type of wet snow with temperature from -4°C to 0°C and rainy conditions. Air humidity from 30% to 60%. Use hot application with the waxing iron at 100°/110°C.



PRODUCTS

CLEANER

FLUORCLEAN

CODE: MW0750N - 150 ml - SPRAY
CODE: MW0751N - 0,5 lt - LIQUID
CODE: MW0752N - 1 lt - LIQUID

Liquid cleaner to remove residuals of any type of perfluorinated wax and the dirt collected during activity.



PRODUCTS

CLEANER

CLEAN

CODE: MW0755 - 150 ml - SPRAY
CODE: MW0756 - 0,5 lt - LIQUID
CODE: MW0757 - 1 lt - LIQUID
CODE: MW0758 - 4,9 lt - LIQUID

Liquid cleaner to remove residuals of any type of paraffin (fluorinated paraffin included) and the dirt collected during activity.



PRODUCTS

RACING BASE PARAFFIN

ARCTIC BASE

CODE: MW1000 - POWDER - 100 gr
CODE: MW0810 - 250 gr
CODE: MW0820 - 1 kg

USE

SNOW TEMP: -30° / -10° C
APPLICATION: 160 °C

Powder and solid paraffin for training use and racing. Use for new, fine, abrasive snow with temperature from -30°C to -10°C. In case of very abrasive old icy snow (spring snow and glacier snow), this paraffin can be used over the fluorocarbon waxes FP4 to increase their long lasting. The final result will be a lower hydrophobia. It can also be used as universal hardener to protect the polyethylene base along the steel edges foils in case of natural or artificial very abrasive snow. Use hot application with the waxing iron at 160°C.



PRODUCTS

RACING BASE PARAFFIN

MED BASE

CODE: MW0870 - 250 gr
CODE: MW0875 - 1 kg

USE

SNOW TEMP: -10° / -5° C
APPLICATION: 130° / 140 °C

Solid base paraffin for any type of snow with temperature from -10°C to -5°C. It's an excellent product for the protection of racing ski bases and it can be used as universal training and testing base. Use hot application with the waxing iron at 130°/140°C.



PRODUCTS

RACING BASE PARAFFIN

SOFT BASE

CODE: MW0871 - 250 gr
CODE: MW0876 - 1 kg

USE

SNOW TEMP: -5° / 0° C
APPLICATION: 120° / 130 °C

Solid base paraffin for any type of snow with temperature from -5°C to 0°C. It's an excellent product for the saturation and the protection of racing ski bases and it can be used as universal training and testing base. It has a melting point of 60°C so it's the best product for the hot saturation of polyethylene ski bases with the thermo-box or the thermo-cover. Use hot application with the waxing iron at 120°/130°C.



PRODUCTS

RACING BASE PARAFFIN

XSOFT BASE

CODE: MW0873 - 250 gr
CODE: MW0878 - 1 kg

USE

SNOW TEMP: -2° / 0° C
APPLICATION: 110° / 120 °C

Solid base paraffin for any type of snow with temperature from -2°C to 0°C. It's an excellent product for the saturation and the protection of racing ski bases. It has a melting point of 48°C so it's a very good product for the hot saturation of polyethylene ski bases with the thermo-box or the thermo-cover. Use hot application with the waxing iron at 110°/120°C.



ALPINE/NORDIC/SNOWBOARD

SKI WAX

SPORT LINE



PRODUCTS

LP15
LOW FLUORINATED PARAFFIN

LP15 VIOLET

CODE: MW0400N - 100 gr
CODE: MW0410N - 250 gr
CODE: MW0420N - 1 kg

USE

AIR TEMP: -19°/ -9° C
HUMIDITY: > 50 %
APPLICATION: 140° / 150 °C

Low fluoro solid paraffin for training use and leisure. Use for all type of snow, with temperature from -19°C to -9°C. Performancing use with air humidity > 50%. Use hot application with the waxing iron at 140°/150°C.



PRODUCTS

LP15
LOW FLUORINATED PARAFFIN

LP15 RED

CODE: MW0401N - 100 gr
CODE: MW0411N - 250 gr
CODE: MW0421N - 1 kg

USE

AIR TEMP: -9°/ -3° C
HUMIDITY: > 50 %
APPLICATION: 130° / 140 °C

Low fluoro solid paraffin for training use and leisure. Use for all type of snow, not wet, with temperature from -9°C to -3°C. It's an excellent product for the protection of ski bases and it can be used as universal racing and training base. Performancing use with air humidity > 50%. Use hot application with the waxing iron at 130°/140°C.



PRODUCTS

LP15
LOW FLUORINATED PARAFFIN

LP15 YELLOW

CODE: MW0402N - 100 gr
CODE: MW0412N - 250 gr
CODE: MW0422N - 1 kg

USE

AIR TEMP: -3°/ +9° C
HUMIDITY: > 50 %
APPLICATION: 120° / 130 °C

Low fluoro solid paraffin for training use and leisure. Use for all type of snow, not wet, with temperature from -3°C to +9°C. Performancing use with air humidity > 50%. Use hot application with the waxing iron at 120°/130°C.



PRODUCTS

BP10
HYDRO CARBON PARAFFIN

BP10 VIOLET

CODE: MW0300 - 100 gr
CODE: MW0310 - 250 gr
CODE: MW0320 - 1 kg

USE

AIR TEMP: -19°/ -9° C
HUMIDITY: < 50 %
APPLICATION: 140° / 150 °C

Solid paraffin for training use and leisure. Use for all type of snow, not wet, with temperature from -19°C to -9°C. Performancing use with air humidity < 50%. Use hot application with the waxing iron at 140°/150°C.



PRODUCTS

BP10
HYDRO CARBON PARAFFIN

BP10 RED

CODE: MW0301 - 100 gr
CODE: MW0311 - 250 gr
CODE: MW0321 - 1 kg

USE

AIR TEMP: -9°/ -3° C
HUMIDITY: < 50 %
APPLICATION: 130° / 140 °C

Solid paraffin for training use and leisure. Use for all type of snow, not wet, with temperature from -9°C to -3°C. It's an excellent product for the protection of ski bases and it can be used as universal racing and training base. Performancing use with air humidity < 50%. Use hot application with the waxing iron at 130°/140°C.



PRODUCTS

BP10
HYDRO CARBON PARAFFIN

BP10 YELLOW

CODE: MW0302 - 100 gr
CODE: MW0312 - 250 gr
CODE: MW0322 - 1 kg

USE

AIR TEMP: -3°/ +9° C
HUMIDITY: < 50 %
APPLICATION: 120° / 130 °C

Solid paraffin for training use and leisure. Use for all type of snow, not wet, with temperature from -3°C to +9°C. Performancing use with air humidity < 50%. Use hot application with the waxing iron at 120°/130°C.



ALPINE/NORDIC/SNOWBOARD

SKI WAX

PER
FOR
MAN
CE LINE



PRODUCTS	LIQUID SKIWAX HIGH FLUORINATED PARAFFIN		
	HP3 COLD	HP3 MED	HP3 HOT
USE	CODE: MW0930N - 75 ml CODE: MW0940N - 0,5 lt	CODE: MW0931N - 75 ml CODE: MW0941N - 0,5 lt	CODE: MW0932N - 75 ml CODE: MW0942N - 0,5 lt
	SNOW TEMP: -22°/-8° C HUMIDITY: 60/100%	SNOW TEMP: -9°/-2° C HUMIDITY: 60/100%	SNOW TEMP: -3°/0° C HUMIDITY: 60/100%
High fluorinated liquid paraffin for racing use as final product or as a base before applying fluorocarbon waxes FP4.			
HP3 COLD Use for any type of snow from -22°C to -8°C. Air humidity from 60% to 100%.			
HP3 MED Use for any type of snow from -9°C to -2°C. Air humidity from 60% to 100%			
HP3 HOT Use for any type of snow from -3°C to 0°C. Air humidity from 60% to 100%.			
Use cold application with manual cork and manual brush.			

PRODUCTS	LIQUID SKIWAX FLUORINATED PARAFFIN		
	LP2 COLD	LP2 MED	LP2 HOT
USE	CODE: MW0980N - 75 ml CODE: MW0983N - 150 ml CODE: MW0986N - 0,5 lt	CODE: MW0981N - 75 ml CODE: MW0984N - 150 ml CODE: MW0987N - 0,5 lt	CODE: MW0982N - 75 ml CODE: MW0985N - 150 ml CODE: MW0988N - 0,5 lt
	SNOW TEMP: -22°/-8° C HUMIDITY: 30/60%	SNOW TEMP: -9°/-2° C HUMIDITY: 30/60%	SNOW TEMP: -3°/0° C HUMIDITY: 30/60%
Fluorinated liquid paraffin for racing use as final product or as a base before applying fluorocarbon waxes FP4.			
LP2 COLD Use for any type of snow from -22°C to -8°C. Air humidity from 30% to 60%.			
LP2 MED Use for any type of snow from -9°C to -2°C. Air humidity from 30% to 60%.			
LP2 HOT Use for any type of snow from -3°C to 0°C. Air humidity from 30% to 60%.			
Use cold application with manual cork and manual brush.			

PRODUCTS	LIQUID SKIWAX HYDROCARBON PARAFFIN		
	BP1 COLD	BP1 MED	BP1 HOT
USE	CODE: MW0830 - 75 ml CODE: MW0833 - 150 ml CODE: MW0836 - 0,5 lt	CODE: MW0831 - 75 ml CODE: MW0834 - 150 ml CODE: MW0837 - 0,5 lt	CODE: MW0832 - 75 ml CODE: MW0835 - 150 ml CODE: MW0838 - 0,5 lt
	SNOW TEMP: -22°/-8° C HUMIDITY: < 40%	SNOW TEMP: -9°/-2° C HUMIDITY: < 40%	SNOW TEMP: -3°/0° C HUMIDITY: < 40%
Liquid paraffin for training use and leisure.			
BP1 COLD Use for any type of snow from -22°C to -8°C. Racing use with air humidity < 40%.			
BP1 MED Use for any type of snow from -9°C to -2°C. Racing use with air humidity < 40%. It can be used as universal training product.			
BP1 HOT Use for any type of snow from -3°C to 0°C. Racing use with air humidity < 40%.			
Use cold application with manual cork and manual brush.			



PRODUCTS

LIQUID SKIWAX
GLIDING LIQUID KIT

BP1 KIT 3 x 75 ml

CODE: MW0839

Liquid paraffin for training use and leisure.

BP1 COLD	Use for any type of snow from -22°C to -8°C. Racing use with air humidity < 40%..
BP1 MED	Use for any type of snow from -9°C to -2°C. Racing use with air humidity < 40%. It can be used as universal training product.
BP1 HOT	Use for any type of snow from -3°C to 0°C. Racing use with air humidity < 40%.

Use cold application with manual cork and manual brush.

BP1 COLD KIT

CODE: MW0201

SNOW TEMP: - 22°/ - 8° C
HUMIDITY: < 40%

- Kit with MT0111
(cork/nylon brush)

A product shot of the BP1 COLD KIT. It features a white spray bottle with a blue cap and a label that reads 'MAPLUS BP1 MED LIQUID'. Next to the bottle is a rectangular brush with a light-colored wooden back and white bristles.

BP1 MED KIT

CODE: MW0202

SNOW TEMP: - 9°/ - 2° C
HUMIDITY: < 40%

- Kit with MT0111
(cork/nylon brush)

A product shot of the BP1 MED KIT. It features a white spray bottle with a blue cap and a label that reads 'MAPLUS BP1 MED LIQUID'. Next to the bottle is a rectangular brush with a light-colored wooden back and white bristles.

BP1 HOT KIT

CODE: MW0203

SNOW TEMP: - 3°/ 0° C
HUMIDITY: < 40%

- Kit with MT0111
(cork/nylon brush)

A circular logo with a black border. Inside, there is a green stylized leaf. The text 'EcoFluorMax' is written in a circular path around the leaf.

A product shot of the BP1 HOT KIT. It features a white spray bottle with a blue cap and a label that reads 'MAPLUS SUPER GLIDE WAX LIQUID'. Next to the bottle is a rectangular brush with a light-colored wooden back and white bristles.

UNIVERSAL FLUORO

CODE: MW0200N

- Kit with MT0111
(cork/nylon brush)

SKIN & GLIDE TOP KIT

CODE: MW0206

Kit with:

- MW0830 (BP1 Cold 75 ml) Snow Temp. -22°C to -8°C. Air humidity < 40%.
- MW0831 (BP1 Med 75 ml) Snow Temp. - 9°C to -2°C. Air humidity < 40%.
- MW0832 (BP1 Hot 75 ml) Snow Temp. - 3°C to 0°C. Air humidity < 40%.
- MW0755 (Clean 150 ml)
- MT0900 (Fiberlene tape)
- MT0111 (cork/nylon brush)

High quality universal liquid paraffin for training, sporting use and leisure. Thanks to the different wax versions included in this kit, it can be used for all type of snow. The product has a felt cap applicator to allow a quick waxing "last minute" operation with great gliding and long lasting, on ski sole and even on skin skis. Otherwise the useful cork/nylon brush let allows to have a professional gliding result.

ALPINE/NORDIC/SNOWBOARD

SKI WAX SUPER GLIDE DE LINE WAX



PRODUCTS

UNIVERSAL FLUORO SUPER GLIDE WAX DISPLAY BOX LIQUID

CODE: MW0718N
SIZE: 12 pz x 75 ml

USE

SNOW TEMP: -15°/ 0° C

High quality universal liquid paraffin for sporting use and leisure. Use for all type of snow. The product has a felt cap applicator to allow a quick waxing "last minute" operation with great gliding and long lasting.



PRODUCTS

UNIVERSAL FLUORO SUPER GLIDE WAX DISPLAY BOX CREAM

CODE: MW0724N
SIZE: 12 pz x 75 ml

USE

SNOW TEMP: -15°/ 0° C

High quality universal low fluoro glide wax. Ideal for sporting and leisure in all conditions. Quick application with the sponge-cap included by rubbing and pressing. Then for best results polish the base with a horsehair or nylon brush.



PRODUCTS

UNIVERSAL FLUORO SUPER GLIDE WAX CREAM

CODE: MW0722N
SIZE: 250 ml

USE

SNOW TEMP: -15°/ 0° C

High quality universal low fluoro glide wax. Ideal for sporting and leisure in all conditions. Quick application with the sponge included by rubbing and pressing. Then for best results polish the base with a horsehair or nylon brush.



PRODUCTS

UNIVERSAL FLUORO SUPER GLIDE WAX SOLID

CODE: MW0728N
SIZE: 100 gr

USE

SNOW TEMP: -15°/ 0° C
APPLICATION: 130° / 140° C

Universal all temperature high quality paraffin glide wax for sporting and leisure in all conditions. Use hot application with the waxing iron at 130°/140°C. Also ideal for rub-on and go application!



ALPINE/NORDIC/SNOWBOARD

SKI WAX

UNI VER SAL WAX LINE



UNIVERSAL SOLID
UNIVERSAL WAX LINE

Universal solid paraffin for sporting use and leisure. Use for all type of snow, not moist and wet, with temperature from -15°C to -5°C. It's a product especially suitable for rentals and laboratories. Use hot application with the waxing iron at 130°/140°C or with professional waxing machines.

PRODUCTS

RED

CODE: MW0700 - 100 gr
CODE: MW0702 - 1 kg

USE

SNOW TEMP: - 15°/ - 5° C
APPLICATION: 130° / 140 °C



PRODUCTS

UNIVERSAL BACKSHOP
GRANULAR AND SOLID WAX
COLD

CODE: MW0709 - 1 Kg
CODE: MW0710 - 5 kg
CODE: MW0712 - 20 kg

SNOW TEMP: - 15°/ -5° C

Universal solid and granular paraffin for all type of winter snow, not moist and wet, from temperature -15°C to -5°C.It's a product especially suitable for rentals and laboratories. Use hot application with professional waxing machines.

PRODUCTS

UNIVERSAL BACKSHOP
GRANULAR AND SOLID WAX
HOT

CODE: MW0714 - 1 Kg
CODE: MW0711 - 5 kg
CODE: MW0713 - 20 kg

SNOW TEMP: - 5°/ 0° C

Universal solid and granular paraffin for all type of moist and wet snow from temperature -5°C to 0°C. It's a product especially suitable for rentals and laboratories. Use hot application with professional waxing machines.



UNIVERSAL SOLID
UNIVERSAL WAX LINE

Universal solid paraffin for sporting use and leisure. Use for all type of moist and wet snow, with temperature from -5°C to 0°C. It's a product especially suitable for rentals and laboratories. Use hot application with the waxing iron at 110°/120°C or with professional waxing machines.

PRODUCTS

YELLOW

CODE: MW0701 - 100 gr
CODE: MW0703 - 1 kg

USE

SNOW TEMP: - 5°/ 0° C
APPLICATION: 110° / 120 °C



PRODUCTS

UNIVERSAL LIQUID
UNIVERSAL WAX LINE

UNIVERSAL LIQUID

CODE: MW0715 - 1 lt
CODE: MW0716 - 4.9 lt

Universal liquid paraffin for sporting use and leisure. Use for all type of snow. It's a product especially suitable for rentals and laboratories. Use cold application with brush and manual cork.



UNIVERSAL SOLID
FLUORINATED
UNIVERSAL WAX LINE

Universal fluorinated solid paraffin for sporting use and leisure. Use for all type of snow, not moist and wet, with temperature from -15°C to -5°C. It's a product especially suitable for rentals and laboratories. Use hot application with the waxing iron at 130°/140°C or with professional waxing machines.

PRODUCTS

RED FLUORO

CODE: MW0705N - 100 gr
CODE: MW0707N - 1 kg

USE

SNOW TEMP: - 15°/ - 5° C
APPLICATION: 130° / 140 °C



UNIVERSAL SOLID
FLUORINATED
UNIVERSAL WAX LINE

Universal fluorinated solid paraffin for sporting use and leisure. Use for all type of moist and wet snow, with temperature from -5°C to 0°C. It's a product especially suitable for rentals and laboratories. Use hot application with the waxing iron at 110°/120°C or with professional waxing machines.

PRODUCTS

YELLOW FLUORO

CODE: MW0706N - 100 gr
CODE: MW0708N - 1 kg

USE

SNOW TEMP: - 5°/ 0° C
APPLICATION: 110° / 120 °C



PRODUCTS

ANTI ICE
UNIVERSAL WAX LINE

ANTI ICE

CODE: MW0732
SIZE: 150 ml

Special silicone spray made to prevent the grip waxes from freezing or to avoid ice formation on the kick zone of no-wax ski. It's also useful to avoid ice formation on the serigraphy and the side of any type of ski. Cold application.



ALPINE/NORDIC/SNOWBOARD

SKI ALP WAX LINE



PRODUCTS

UNIVERSAL TOUR TOURING SKIN & BASE WAX DISPLAY BOX LIQUID

CODE: MW0747
SIZE: 12 pz x 75 ml

USE

SNOW TEMP: - 15°/ 0° C

High quality universal liquid paraffin for sporting use on ski-alp skins and ski bases with every kind of snow. The product has a felt cap applicator that allows quick cold “last minute” waxing with great gliding and long lasting.



PRODUCTS

UNIVERSAL TOUR RACING SKIN WAX BLUE BOOST RUB-ON

CODE: MW0748N
SIZE: 20 gr

USE

SNOW TEMP: - 20°/ - 5° C
APPLICATION: 150° C ☞

Fluorocarbon special solid mix for waxing ski-alp racing skins. Use for every cold snow from -20°C to -5°C. Recommended cold application by rubbing over the skin. To obtain even higher durability some quick passages with waxing iron at 150° C can be made (exclusively on pure mohair skins).



PRODUCTS

UNIVERSAL TOUR RACING SKIN WAX RED BOOST RUB-ON

CODE: MW0749N
SIZE: 20 gr

USE

SNOW TEMP: - 5°/ 0° C
APPLICATION: 150° C ☞

Fluorocarbon special solid mix for waxing ski-alp racing skins. Use for every warm and wet snow from -5°C to 0°C. Recommended cold application by rubbing over the skin. To obtain even higher durability some quick passages with waxing iron at 150° C can be made (exclusively on pure mohair skins).



PRODUCTS

UNIVERSAL TOUR TOURING SKIN & BASE WAX UNIVERSAL SKIN SPRAY

CODE: MW0745
SIZE: 250 ml

USE

SNOW TEMP: - 15°/ 0° C

Universal spray polymer for skin protection from icing and dirt, improving gliding properties. For all snow conditions.

A close-up photograph of a person's hands operating a lathe. The person is wearing a brown jacket and is holding a black handle that is part of a tool or the lathe's mechanism. A large, smooth, white cylindrical object is mounted on the lathe's spindle. The background is blurred, showing a workshop environment with various tools and equipment. The text 'TOOLS AND ACCESSORIES' is overlaid on the right side of the image in a large, white, sans-serif font.

TOOLS AND AC CE SOR IES

NEW MAPLUSTEX ROLLERS

Who has never struggled to speed up skis after grinding them?
Or to remedy to damages due to very abrasive and coarse snow or too high iron temperature ?
For solving all these situations you must choice new MaplusTex rollers .

Thanks to their open, threedimensional structure of special synthetic fibres, they allow:

- to speed up ski sole and to eliminate microhairs after a new structuring with grinding machine;
- to remove from ski sole the opacity following the use of a waxing iron utilized at too high temperatures;
- to eliminate micro-waves created when sliding on very abrasive or icy snow;
- to remove residues of a very hard wax (as Maplus Artic Base solid).

CATALOG 2020
2021

MAPLUSTEX

MAPLUS

GENERAL CATALOG 2020/21



TOOLS

AND ACCESSORIES

MAPLUSTEX FINE

CODE: MT0090RS

LENGHT : 10 cm - DIAMETER 11 cm

Thanks to its abrasive microlamine, it allows to speed up ski sole in really short time – just three passages are recommended – after new structuring with grinding machine. It also rejuvenates ski sole from opacity due to very abrasive or icy snow or after using an overtemperated waxing iron.



TOOLS

AND ACCESSORIES

MAPLUSTEX EXTRA FINE

CODE: MT0095RS

LENGHT : 10 cm - DIAMETER 11 cm

Thanks to its special fibres, it is recommended for removing microhairs from nordic skis after new structuring or grinding up. It also gives the final touch to the skis speeding up done with MaplusTex Fine: three passages after using MaplusTex Fine guarantee the best final results. Specially indicated for removing residues of a very hard solid wax, as Maplus Artic Base solid.

HOW TO USE TIPS

- having a larger diameter than normal rotating brushes, they must be used with minimum pressure at a maximum drill speed of 700/800 revolutions per minute (rpm);
- it is preferable to use them before preparing the edges, in order to avoid rounding off the cusps;
- after using MaplusTex rollers it is recommended to thoroughly clean the base with a specific liquid cleaner, as Maplus Clean, so to remove any residues.

SPEED FABRIC ROLLERS



PRODUCTS

SPEED FABRIC ROLLERS

SPREADING ROLLER POLYESTER

CODE: MT0070 - cm 10
CODE: MT0075 - cm 14
CODE: MT0080 - cm 20



PRODUCTS

SPEED FABRIC ROLLERS

BRUSHING ROLLER MERINO WOOL 5mm

CODE: MT0081 - cm 20



PRODUCTS

SPEED FABRIC ROLLERS

POLISHING ROLLER MERINO WOOL 12mm

CODE: MT0072N - cm 10
CODE: MT0077N - cm 14
CODE: MT0082N - cm 20



PRODUCTS

SPEED FABRIC ROLLERS

POLYESTER & MERINO WOOL ROTO SET CM 10

CODE: MT0085N



PRODUCTS

SPEED FABRIC ROLLERS

POLYESTER & MERINO WOOL ROTO SET CM 14

CODE: MT0086N



PRODUCTS

SPEED FABRIC ROLLERS

POLYESTER & MERINO WOOL ROTO SET CM 20

CODE: MT0087N

Polyester and Merino wool rollers especially recommended for hot or cold application of every FP4 perfluorinated waxes (powder, spray or solid).

Instead of roto-cork and traditional horsehair and nylon brushes, use new rollers of polyester and merino wool as follows:

1. Roll the base surface with the roto-polyester in both directions at a speed between 1000 and 1500 rpm according to the pressure applied. Repeat several times until the complete saturation of the base surface. Wait at least 10 minutes for cooling of the base surface and for the ski wax to harden.

2. Free the base structure with the 5 mm. roto-wool.

3. Polish the base structure with the 12 mm. roto-wool.

For top performances is necessary one set of new rollers for every type of product (cold-med-hot).

WAXING IRONS



PRODUCTS

WAXING IRONS

ADJUSTABLE WAXING IRON T10B.15

CODE: KZ05000N
AC 220V
MAX TEMP. 200°C



PRODUCTS

WAXING IRONS

DIGITAL WAXING IRON T10A.15

CODE: KZ06000N
AC 220V
MAX TEMP. 200°C



PRODUCTS

WAXING IRONS

DIGITAL WAXING IRON T10A.35

CODE: KZ03000N
AC 220V
MAX TEMP. 200°C



PRODUCTS

WAXING IRONS

ELECTRONIC IRON WAX

CODE: KZ06001
AC 110V
MAX TEMP. 160°C
ONLY US AND JAPAN MARKET



PRODUCTS

WAXING IRONS

FACIAL MASK

CODE: KZ08000
CE EN 136 - Class 3

First choice waxing iron with easy temperature manual setting. Easy waxing in all directions due to ergonomic shape. Very competitive quality/price ratio.

Professional powerfull digital waxing iron. The digital microprocessor controls temperature adjustment till 200°C. Inox iron plate guarantees a constant temperature of working. Easy waxing in all directions due to ergonomic shape.

World Cup high professional waxing iron, with extremely precise digital temperature setting by digital microprocessor. The 35mm thick inox iron base guarantees the fully constant temperature. This iron wax is especially studied for handling all racing perfluorinated waxes which require stable and constant high temperature. Easy waxing in all directions due to ergonomic shape.



PRODUCTS

WAXING IRONS

IRON WAX

CODE: KZ05001
AC 110V
MAX TEMP. 160°C
ONLY US AND JAPAN MARKET



PRODUCTS

WAXING IRONS

FILTER FOR FACIAL MASK

CODE: KZ08001
MSA A2-B2-E2-K1-HG-P3 CE

SKI FILES



Viiala skifile

PRODUCTS

SKI FILES

HARD CHROME FINE
CODE: ML0001 - 150 mm
CODE: ML0002 - 200 mm

Universal FINE file with hard-chromed surfaces: satisfied the technical requirements of professional skimen

PRODUCTS

SKI FILES

HARD CHROME COARSE
CODE: BK00010 - 150 mm
CODE: ML0003 - 200 mm

Universal COARSE file, with hard-chromed surfaces: satisfied the technical requirements of professional skimen

PRODUCTS

SKI FILES

HARD CHROME SUPER COARSE
CODE: ML0004 - 200 mm

Universal SUPERCOARSE file, with hard-chromed surfaces: satisfied the technical requirements of professional skimen



front: coarse

back: medium

PRODUCTS

SKI FILES

COMBI FILE MEDIUM - COARSE
CODE: ML0530 - 80 mm

Made of premium steel, this is the only ski file with two different cuts: a coarse cut on one side to provide an high and frank bite, and a medium cut on the other side to provide a fine tune on edge sharpening. Now with the same file it is possible to remove the excess of sidewall material, to sharpen damage edges and to refine edge sharpening with high precision. Its dimensions are adapted to most sharpeners of 80mm in length. With this combination, sharpening it is not only faster but also much more easy: every skis or snowboard will have a precise and powerful bite.



PRODUCTS

SKI FILES

FILE BRUSH
CODE: MT0100

The perfect brush for cleaning all kind of files



Viiala skifile

PRODUCTS

SKI FILES

BODY FILE
CODE: ML0005 - 300 mm

Radial file special studied for roughing skis and snowboards



PRODUCTS

SKI FILES

PROFESSIONAL HARD CHROME BASTARD
CODE: ML0501 - 200 mm

Due to their high level precision and performance, these files are considered as the reference by the world's most renowned professional skimen. They are chosen by the most demanding users for their smooth and consistent bite.Thanks to their chromed plates, these files are protected against corrosion.

PRODUCTS

SKI FILES

PROFESSIONAL HARD CHROME 2ND CUT
CODE: ML0502 - 200 mm

PRODUCTS

SKI FILES

PROFESSIONAL HARD CHROME SMOOTH
CODE: ML0503 - 150 mm



PRODUCTS

SKI FILES

PROFESSIONAL NO-CHROME BASTARD
CODE: ML0511 - 200 mm

Due to their high level precision and performance, these files are considered as the reference by the world's most renowned professional skimen. They are chosen by the most demanding users for their smooth and consistent bite.

PRODUCTS

SKI FILES

PROFESSIONAL NO-CHROME 2ND CUT
CODE: ML0512 - 200 mm

PRODUCTS

SKI FILES

PROFESSIONAL NO-CHROME SMOOTH
CODE: ML0513 - 150 mm



PRODUCTS

SKI FILES

PRO RS NO-CHROME COARSE
CODE: ML0525 - 100 mm

PRODUCTS

SKI FILES

PRO RS NO-CHROME MEDIUM
CODE: ML0526 - 100 mm

PRODUCTS

SKI FILES

PRO RS NO-CHROME FINE
CODE: ML0527 - 100 mm

These files benefit from ideal dimensions and fit to a very precise sharpening. Produced with a premium steel in order to assure a consistent quality to the product, These files are optimized for an exceptional biting and do not clog.

DIAFACE - DIAMOND - STONES



PRODUCTS

DIAFACE

DIAFACE 100 gr
CODE: MP0210 - 70 mm
MP0200 - 100 mm

DIAFACE 400 gr
CODE: MP0212 - 70 mm
MP0202 - 100 mm

DIAFACE 1000 gr
CODE: MP0214 - 70 mm
MP0204 - 100 mm

DIAFACE 200 gr
CODE: MP0211 - 70 mm
MP0201 - 100 mm

DIAFACE 600 gr
CODE: MP0213 - 70 mm
MP0203 - 100 mm



PRODUCTS

DIAMOND

WORLD CUP DIAMOND 100 gr
CODE: MP0310 - 70 mm
MP0300 - 100 mm

WORLD CUP DIAMOND 400 gr
CODE: MP0312 - 70 mm
MP0302 - 100 mm

WORLD CUP DIAMOND 1000 gr
CODE: MP0314 - 70 mm
MP0304 - 100 mm

WORLD CUP DIAMOND 200 gr
CODE: MP0311 - 70 mm
MP0301 - 100 mm

WORLD CUP DIAMOND 600 gr
CODE: MP0313 - 70 mm
MP0303 - 100 mm



PRODUCTS

DIAFACE

MINI SQUARE 88°
CODE: MP0150
for diaface 70 mm

MINI SQUARE 87°
CODE: MP0151
for diaface 70 mm



PRODUCTS

STONES

NATURAL STONE
CODE: MP0002 - FINE
CODE: MP0003 - MEDIUM



PRODUCTS

STONES

GUMMY STONE ALLAROUND
CODE: MP0015



PRODUCTS

STONES

GUMMY STONE FINE
CODE: MP0010



PRODUCTS

STONES

ARKANSAS
CODE: MP0004 - EXTRA FINE



PRODUCTS

STONES

ALU OXIDE STONE
CODE: BK00006 MEDIUM



PRODUCTS
WAXING TOOLS
CORK/NYLON BRUSH
CODE: MT0111
75 x 55 x 34 mm



PRODUCTS
WAXING TOOLS
SYNTHETIC CORK
CODE: MT0113
70 x 50 x 35 mm



PRODUCTS
WAXING TOOLS
CORK/FELT PAD
CODE: MT0115
135 x 42 x 39 mm



PRODUCTS
WAXING TOOLS
FELT PAD
CODE: MT0118
135 x 42 x 39 mm



PRODUCTS
WAXING TOOLS
VELCRO® PAD
CODE: MT0119
135 x 42 x 39 mm



PRODUCTS
WAXING TOOLS
CORK
CODE: MT0110
70 x 50 x 35 mm



PRODUCTS
WAXING TOOLS
NORDIC SCRAPER
CODE: MT0510
GROOVE SCRAPER
CODE: MT0512



PRODUCTS
WAXING TOOLS
STEEL SCRAPER
CODE: MT0513 - 1 mm



PRODUCTS
WAXING TOOLS
PLEXY SCRAPER
CODE: MT0511
130 x 60 x 4 mm
SNOWBOARD SCRAPER
CODE: MT0515
260 x 70 x 5 mm



PRODUCTS
WAXING TOOLS
PTFE TAPE
CODE: MT0901
10 mt x 130 mm
PTFE SHEET
CODE: MT0902 - 10 pcs
200 x 130 mm



PRODUCTS
WAXING TOOLS
FIBERLENE TAPE
CODE: MT0900
10 mt x 130 mm



PRODUCTS
WAXING TOOLS
STANDARD THERMOMETER
CODE: MT0915
temp. -20°/+50°



PRODUCTS
WAXING TOOLS
DIGITAL PROBE THERMOMETER
CODE: MT0921
temp. -40°/+200°



PRODUCTS
WAXING TOOLS
THERMO-HYGROMETER
CODE: MT0923
temp. -20°/+50°
hr 10% / 95%



PRODUCTS
WAXING TOOLS
DIGITAL THERMO HYGROMETER
CODE: MT0920
temp. -40°/+70°
hr. 1% / 99%



PRODUCTS
WAXING TOOLS
POWDER NET DISPENSER
CODE: MT0905



PRODUCTS
WAXING TOOLS
INFRARED THERMOMETER GUN
CODE: MT0916
temp. -33°/+500°



PRODUCTS
WAXING TOOLS
SKIMAN BOX
CODE: BMC0100
470 x 360 x 175 mm



10 alpine ski or 20 XC ski - 55°C x 6/8 hours - for ski base saturation



PRODUCTS
WAXING TOOLS
THERMO WAXING COVER
ALPINE - MT0801N - AC 220V
ALPINE - MT0801NUS - AC 110V

55°C - 60°C - 2300 x 140 mm
55°C x 1,5 h for quick ski base saturation



THERMO WAXING COVER
FREERIDE - MT0805N - AC 220V
FREERIDE - MT0805NUS - AC 110V

55°C - 60°C - 2000 x 170 mm
55°C x 1,5 h for quick ski base saturation



THERMO WAXING COVER
SNOWBOARD - MT0806N - AC 220V
SNOWBOARD - MT0806NUS - AC 110V

55°C - 60°C - 1800 x 330 mm
55°C x 1,5 h for quick ski base saturation



PRODUCTS
WAXING TOOLS
THERMO WAXING COVER
JUMPING - MT0801JP - AC 220V

55°C - 60°C - 3000 x 185 mm
55°C x 2 h for quick ski base saturation



PRODUCTS
WAXING TOOLS
CLAMP FOR THERMO COVER
CODE: MT0802

PRODUCTS

SKILAB ACCESSORIES

PROTECTIVE MASK
CODE: KZ08005

PRODUCTS

SKILAB ACCESSORIES

HOLE PLUGS
CODE: LK21101 - 500 pcs
MIXED NORMAL COLORS

PRODUCTS

SKILAB ACCESSORIES

STEEL SKI DRILL
CODE: MM420L - 3,5 x 7 mm
CODE: MM420L - 3,5 x 9 mm
CODE: MM420L - 3,8 x 10 mm
CODE: MM420L - 3,8 x 15 mm
CODE: MM420L - 4,1 x 9 mm

PRODUCTS

SKILAB ACCESSORIES

SCREW DRIVER BIT
CODE: MMF4302
pzd2 x 110 mm - A4 standard
CODE: MMF4303
pzd3 x 110 mm - A4 standard

PRODUCTS

SKILAB ACCESSORIES

**ELASTICS FOR
BINDING**
CODE: SM058100 - 1 kg

PRODUCTS

SKILAB ACCESSORIES

**STEEL STRUCTURE
BRUSH**
CODE: BK00130

PRODUCTS

SKILAB ACCESSORIES

TRUE BAR
CODE: MT0514 - 3 mm
STEEL SCRAPER

PRODUCTS

SKILAB ACCESSORIES

**PLASTIC BUSHING
THREADED**
CODE: LK21201 - 100 pcs
BLACK

PRODUCTS

SKILAB ACCESSORIES

**HARD STEEL
SKI DRILL**
CODE: MM420CO - 4,1 x 9 mm

PRODUCTS

SKILAB ACCESSORIES

**LUBRICANT FOR
SKI BINDINGS**
CODE: MM490 - 150 ml

PRODUCTS

SKILAB ACCESSORIES

SAND PAPER 70 x 200 mm
CODE: BK00008 gr 600 - 5 pcs

SAND PAPER 120 x 200 mm
CODE: BK00950 gr 180 - 5 pcs
CODE: BK00951 gr 120 - 5 pcs

PRODUCTS

WAXING TOOLS

MAPLUSTEX KIT
CODE: BK00009
135 x 110 x 7 mm

three different abrasive mats for
smoothing ski base

PRODUCTS

MAINTENANCE SOLES

SKI BASE
CODE: LK00001 - transparent - 4pcs
LK00002 - graphite - 4pcs
250 x 80 x 1,3 mm

PRODUCTS

MAINTENANCE SOLES

GUN CANDLE ø 11.5 mm
CODE: LK20301 - transparent
LK20302 - graphite
LK20303 - black

PRODUCTS

MAINTENANCE SOLES

**WIRE FOR SMEARING
MACHINE ø 3mm - 0.5 kg**
CODE: LK20601 - transparent
LK20602 - graphite
LK20607 - black

PRODUCTS

MAINTENANCE SOLES

METAL GRIP ø 3,5mm - 10 mt
CODE: LK20902 - transparent
LK20904 - graphite

PRODUCTS

MAINTENANCE SOLES

**POLYMERIC ADHESIVE
FOR SKI BASE REPAIRING**
CODE: LK00010 - amber - 25 ml
LK00015 - black - 25 ml

PRODUCTS

MAINTENANCE SOLES

**UNIVERSAL
CYANACRYLATE ADHESIVE**
CODE: LK00020 - transparent - 30 gr

PRODUCTS

MAINTENANCE SOLES

FREE CANDLE ø 8 mm
CODE: LK20001 - transparent
LK20002 - graphite
LK20003 - black

PRODUCTS

MAINTENANCE SOLES

WELDING STRIP
CODE: LK20401 - transparent
LK20402 - graphite
LK20403 - black

PRODUCTS

MAINTENANCE SOLES

**WIRE FOR SMEARING
MACHINE ø 3mm - 1.5 kg**
CODE: LK20661 - transparent
LK20662 - graphite
LK20667 - black

PRODUCTS

MAINTENANCE SOLES

METAL GRIP ø 3,5mm - 10 mt
CODE: LK20902 - transparent
LK20904 - graphite

PRODUCTS

MAINTENANCE SOLES

MIXING TIPS
CODE: LK00016 - 12 pcs

PRODUCTS

MAINTENANCE SOLES

**PRIMER FOR
POLYETHYLENE**
CODE: LK00021 - spray - 15 ml



PRODUCTS

ACCESSORIES
MERCHANDISING

SYNTHETIC DOWN JACKET
CODE: MA0322
S - M - L - XL - XXL



PRODUCTS

ACCESSORIES
MERCHANDISING

BUTTON NECK SHIRT
CODE: MA0009 - Short sleeves
MA0019 - Long sleeves
S - M - L - XL - XXL



PRODUCTS

ACCESSORIES
MERCHANDISING

XC COVER JACKET - UNISEX
CODE: MA079005U
XS - S - M - L - XL - XXL



PRODUCTS

ACCESSORIES
MERCHANDISING

XC COVER GILET - UNISEX
CODE: MA079006U
XS - S - M - L - XL - XXL



PRODUCTS

ACCESSORIES
MERCHANDISING

SKIMAN APRON COTTON
CODE: MA0003J



PRODUCTS

ACCESSORIES
MERCHANDISING

XC RACE JACKET - LADY
CODE: MA079001W
XS - S - M - L - XL

XC RACE JACKET - MAN
CODE: MA079002M
S - M - L - XL - XXL



PRODUCTS

ACCESSORIES
MERCHANDISING

ADHESIVE PAPER TAPE
CODE: MA1014M



PRODUCTS

ACCESSORIES
MERCHANDISING

NOW WOVEN BANNER
CODE: MA1005M
0,80 x 4 mt

PRODUCTS

ACCESSORIES
MERCHANDISING

XC COVER PANTS - UNISEX
CODE: MA079007U
XS - S - M - L - XL - XXL

MAPLUS

MAPLUS

PRODUCTS

ACCESSORIES
MERCHANDISING

STICKER
CODE: MA1001M - 310 x 50 mm
MA1002M - 830 x 140 mm



PRODUCTS

ACCESSORIES
MERCHANDISING

PATCH
CODE: MA1033B - Black
MA1033W - White



PRODUCTS

ACCESSORIES
MERCHANDISING

CAP
CODE: MC0050M



PRODUCTS

ACCESSORIES
MERCHANDISING

HAT
CODE: MC0005M



PRODUCTS

ACCESSORIES
MERCHANDISING

XC RACE PANTS - LADY
CODE: MA079003W
XS - S - M - L - XL

XC RACE PANTS - MAN
CODE: MA079004M
S - M - L - XL - XXL

ADHESIVE TAPE
CODE: MA1004M



NO-ADHESIVE PAPER SKI TAPE
CODE: MA1044M



MAPLUS